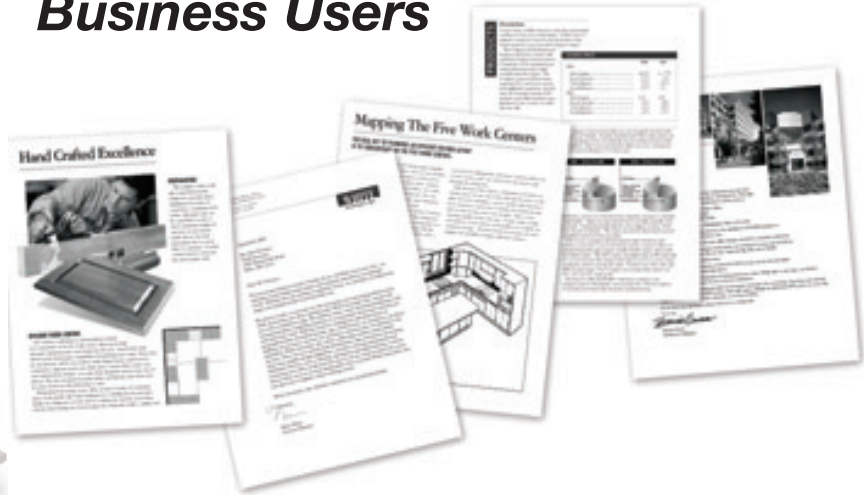


# OKIFAX® 4580

Digital LED Facsimile

## The Full-Featured Stand-Alone Facsimile for Price-Sensitive Business Users



### OKIFAX® 4580 Highlights

- A cost-effective stand-alone fax solution—upgradable via IFax and MFP options
- Compact size and small footprint
- Fast 33.6 Kbps modem for high productivity
- 3 seconds-per-page transmission speed<sup>1</sup>
- 300 dpi scan and print resolution
- 4 MB memory standard: store up to 320 pages<sup>1</sup>
- 10 one-touch and 100 auto-dial numbers
- 100-sheet universal tray
- Manual feed handles letter, legal envelopes, labels and overhead transparencies
- Optional Unimessage™ Pro and Pro LAN Multifunction Upgrade Kits available<sup>2</sup>
- Optional IFax Upgrade Kit (for fax to e-mail capability) available<sup>2</sup>
- 1-Year warranty with Overnight Exchange<sup>3</sup>

<sup>1</sup> Based on ITU-T Test Chart #1.

<sup>2</sup> Either Unimessage or IFax upgrade can be installed, not both.

<sup>3</sup> Available in the U.S. and Canada only.

### A powerful yet compact solution designed to deliver business-class fax performance for single users or small workgroups.

If you're looking for the perfect fit for all your faxing needs, then the OKIFAX® 4580 is your solution. It's just the right size at just the right price—and it offers the fax features you want now, along with upgrade options to address your growing needs.

**Versatile and flexible.** The OKIFAX 4580 is ready to work right out of the box. It lets you transmit and receive documents quickly—at the touch of a button—with a fast 33.6 Kbps G3 modem, transmitting your documents as quickly as 3 seconds per page.<sup>1</sup>

This Digital LED facsimile lets you work more efficiently, and increases productivity with such features as broadcasting, group dialing, polling and 1-touch speed dialing. Its dual access feature lets you set up an outgoing fax while another is coming in.

For a variety of output options, there's the 100-sheet paper tray, 20-sheet automatic document feeder, and manual feed for envelopes, labels, overhead transparencies and custom paper sizes. The straight-through paper path of the OKIFAX 4580 ensures consistent, high-quality output—no warping and no wrinkling.

### A complete range of business-class functions—whenever you need them.

Looking for an all-in-one, compact solution to replace several space-consuming devices? The Unimessage™ Pro and Pro LAN upgrades for the OKIFAX 4580 combine four critical office functions into one fully-integrated, compact and easy-to-use machine. In addition to faxing documents from your PC, the MFP kits let you print, copy and scan.

Or select the IFax upgrade and send documents as .tif or .pdf files to an e-mail address—or group of addresses—over the Internet, quickly and inexpensively.<sup>2</sup>

**Small size, big benefits.** When desk space is at a premium, the OKIFAX 4580 can be easily upgraded, eliminating the need for multiple devices and thus maximizing your workspace.

The OKIFAX 4580 Digital LED Facsimile: When all you need is a fax—and when you need more—this is the solution that will save you time, space and money.



# OKI®

Designed to Perform in the Most Demanding Environments.

PROVEN.

# OKIFAX® 4580

Digital LED Facsimile

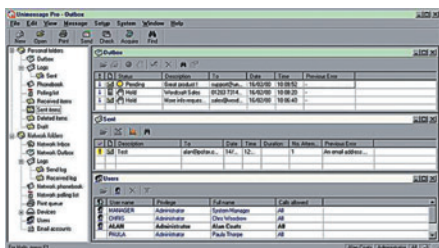
## Communications Options<sup>1</sup>

### Take control of your communications with Unimessage™ Pro software.

Unimessage™ Pro or Pro LAN Multifunction software are options you can add to your OKIFAX® 4580. They allow you—or your workgroup—to fax, PC fax, copy, print, and scan—all from one system.

These fully integrated desktop messaging applications give you the flexibility to:

- Action your messages and files as they arrive in your PC in-box
- View and edit different types of image files without opening other applications
- Broadcast to multi-recipient distribution lists
- Time-delay transmissions and broadcasts to take advantage of cheaper phone rates
- Scan documents and perform optical character recognition (OCR)



Unimessage Pro and Pro LAN software bring together fax, Internet fax, e-mail, printing, copying and scanning to provide fully integrated messaging right on your desktop.

### Enjoy the economic benefits and convenience of fax-to-email with the IFax upgrade.

With the OKI IFax upgrade, you can send paper documents as .tif or .pdf attachments to an e-mail address, a group of addresses, or a combination of fax numbers and e-mail addresses.

Recipients can retrieve their faxes from wherever they have access to e-mail—rather than having to look for an actual fax machine.

# OKI®

Oki, Network Solutions  
for a Global Society

#### To contact Oki Data Americas, Inc.

In USA: 2000 Bishops Gate Blvd.  
Mount Laurel, NJ 08054-4620  
Tel: 800.OKI.DATA (800.654.3282)  
Fax: 856.222.5320

In Canada: 2735 Matheson Blvd. East  
Mississauga, Ontario L4W 4M8  
Tel: 905.238.4250  
Fax: 905.238.4421

#### In Latin America and Mexico:

2000 Bishops Gate Blvd.  
Mount Laurel, NJ 08054-4620  
Tel: 856.231.0002  
Fax: 856.222.5071

## Specifications

### Fax Performance

- **Access:** Walk-up or via PC with options
- **QuickScan Speed:** 6 seconds per page
- **Modem Speed:** 33.6 Kbps
- **Transmission Speed:** 3 seconds per page<sup>2</sup>
- **Dual Access:** Yes
- **Fax Resolution:** 300 x 300 dpi
- **Scan Width:** 8.5" (21.5 cm)
- **One-Touch/Auto-Dials:** 10/100
- **Group Dials:** 10 groups, 110 numbers
- **Delayed Transmission Timers:** 10
- **Broadcasting:** 120 locations
- **Polling:** 110 locations
- **Fax Forwarding:** To fax numbers only

### Optional Upgrades<sup>1</sup>

#### Multifunction Upgrade

- **Description:** Unimessage Pro – stand-alone with host PC; Unimessage Pro LAN – 1 to 5 concurrent users standard, with additional 10-user and 25-user upgrades available
- **Features:** Integrated user "desktop" interface; Optical Character Recognition (OCR); File management (custom capabilities for document creation, management and delivery)
- **Document Management:** Send faxes from PC; send paper documents by fax or e-mail; input existing phonebook data from any database file; receive e-mails and faxes into PC; print copy and scan (see *Optional Functionality*)

#### Internet Fax Upgrade

- **Description:** T.37 Internet protocol-enabled facsimile
- **Features:** Send hard-copy documents as e-mail attachments; distribute to groups of Internet fax machines, e-mail accounts or a combination of both

### Optional Functionality<sup>3</sup>

#### Printing

- **Print Speed:** 8 ppm
- **Print Resolution:** 300 dpi
- **Method:** LED, toner-based

#### Copying

- **Copy Speed:** 8 copies per minute
- **Access:** Walk-up or via PC
- **Number of Copies:** 50-page multi-copy capability
- **Automatic Document Feeder:** Up to 20 originals
- **Resolution:** 300 dpi copying
- **Reduce/Enlarge:** 25%–200%; 2-up and 4-up copying

#### Scanning

- **Resolution:** Up to 300 dpi
- **Scan Speed:** Up to 6 seconds per page
- **Gray Scale:** 64 levels

## Compatibility

- **Fax/Print:** Windows® XP, Me/2000/98/95 and NT® 4.0<sup>3</sup>
- **Scan:** TWAIN compatible<sup>3</sup>

## Interface

- **Optional:** IEEE 1284 bi-directional parallel (cable included); RJ-45 network connection with IFax Upgrade Kit

## Paper Handling

- **Universal Tray:** (100 sheets max.); Letter, Legal, A4
- **Manual Feeder:** Letter, Legal, A4, Envelopes, Labels, Overhead transparencies, Custom sizes

## Memory

- **Fax Standard:** 4 MB (up to 320 fax send/receive pages<sup>2</sup>)

## Environmental

- **Size (W x D x H):** 12.3"x15.3"x7.5" (31.6 cm x 38.3 cm x 19.0 cm)
- **Weight:** 16 lb., 12 oz. (7.6 kg) with image drum
- **Power Modes:** Ready and energy-saving Standby

## Warranty

- **Parts/Labor:** 1-Yr. limited warranty with Overnight Exchange<sup>2</sup>
- **LED Printhead:** 5-Yr. limited warranty

## Ordering Information

Description	Part Numbers
OKIFAX 4580, 120V (Eng)	62211501
OKIFAX 4580, 120V (Eng/Fr)	62211502
<b>Supplies</b>	
Toner Cartridge Kit	52111701
Image Drum Kit	40709901
<b>Options</b>	
Handset Kit	70031801
IFax Upgrade Kit	70046901
Unimessage Pro MFP Kit	70041601
Unimessage Pro LAN MFP Kit	70041701

For more information on OKI Digital LED Facsimile and supplies, including OKIcare® Extended Service Programs: 1-800-OKI-DATA (800-654-3282).

<sup>1</sup> Either IFax option or Unimessage Pro/Pro LAN option can be installed, not both.

<sup>2</sup> Based on ITU-T Test Chart #1.

<sup>3</sup> Requires Unimessage Pro or Pro LAN MFP option.

<sup>4</sup> Available in the U.S. and Canada only.

Specifications are subject to change without notice.

© 2002 Oki Data Americas, Inc. OKI, OKIFAX, OKIcare Reg. T.M., M.D., M.R., Oki Electric Industry Co., Ltd. 7-Day/24-Hour logo, One Year Overnight Exchange logo T.M., Oki Data Americas, Inc. Windows, Windows NT, Reg. T.M., Microsoft Corp. Unimessage T.M., Wordcraft International Corp. Energy Star Reg. T.M., U.S. EPA.

