

DM-3551 / DM-4551

Call BusinessNeedz @ 866-530-8502 for the lowest prices in the country!

SHARP®

Network-Ready Multi-Tasking System

Introducing the Sharp DM-3551 and DM-4551 multi-tasking document systems offering best-in-class functionality and exceptional reliability. With features such as advanced network printing and scanning, PC fax functionality, and industry-leading document and network security, the DM series maximizes productivity and streamlines your document workflow.



Product Highlights

- 35/45 ppm Network Printing
- 1,200 dpi enhanced resolution with smoothing technology
- PCL5e/6 and PostScript Level 3 emulations (standard)
- Standard Job Retention functions (hold print/sample print/confidential print) allow you to control printouts from the control panel
- Large 2,000-sheet paper capacity
- Handles special print media including OHP transparencies and envelopes
- 31" scan capability for oversized originals
- Scan² technology scans a 2-sided document in a single pass — maximizing productivity
- Finishing options include multi-position saddle-stitch finisher, 2-tray stapler/finisher or 8 bin mailbox/sorter
- Available in 3 configurations out of the box:
 - N model - copy & network printing
 - S model - copy & network printing/scanning
 - F model - copy & network printing/scanning & fax
- Fax directly from any Windows PC application via the MFP Fax board without printing to paper first (F models)
- Flexible scanning destinations streamline workflow, save time, and reduce overnight mailing costs. Six destinations include: Scan to E-mail, Scan to Desktop, Scan to FTP, Scan to Fax, Scan to I-Fax, Scan to Group
- Enterprise device management integration with Computer Associates International Inc., Unicenter® TNG 2.2 or later, and IBM Tivoli® Netview 6.02 or later

With innovative LDAP support (lightweight directory access protocol), there's no need to manually enter a recipient's email address. Simply enter the first few characters and a matching list of names will be displayed.

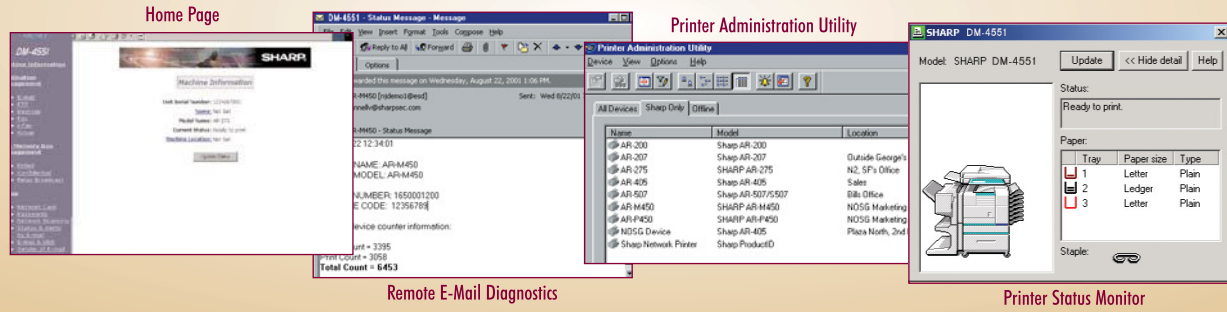
Document & Network Security

- Sharp's Data Security Kit offers layers of advanced security. Encryption and overwrite features protect confidential information, from even the most sophisticated threats
- MFP's LCD panel, giving users greater control over their documents
- MAC & IP filtering protects unauthorized network access
- The Confidential Print feature requires a PIN number in both the Print Window and the



The Sharp Administration Utility Suite

Take advantage of Sharp's incredible network printing capability with Sharp's Administration Utility Suite. The Printer Status Monitor enables the user to check printer and job status directly from the desktop, while the Printer Administration Utility enables the IT Manager to install, connect and manage all Sharp and non-Sharp SNMP compliant printers over the network. With both Windows and web-based interface, installation and customization of your MFP is simple and easy.



SPECIFICATIONS

GENERAL

Type:	Console
Copy system:	Dry, electrostatic transfer system
Paper size:	Max. 11" x 17" / Min. 5.5" x 8.5"
Paper capacity:	2,000 sheets
Copy/print speed (max):	35/45 cpm/ppm (8.5" x 11")
Memory:	320MB RAM and internal 5GB HDD standard
Warm-up time: ¹	Less than 80 seconds
First copy time:	5.3 sec. (35ppm); 4.6 sec. (45ppm) (8.5" x 11", 1st paper tray, fast platen mode)
Power requirements:	Rated local AC voltage \pm 10%, 50/60 Hz
Power consumption:	Max. 1.44 kW
Dimensions (WxDxH):	32 7/16" x 26 11/64" x 43 37/64" (incl. scanner and paper desk)
Weight:	Approx. 220 lbs. (incl. scanner and paper desk)
Account codes:	100

PRINTING (Standard)

Resolution:	600 dpi, 1,200 dpi enhanced with smoothing technology
Interface:	RJ-45 Ethernet with IP/MAC/Protocol filtering; IEEE1284 Parallel Port
Printer drivers:	Windows® 95/98/Me, Windows NT® 4.0, Windows® 2000, Windows® XP, Macintosh System 8.5.1-10.2
PDL:	PCL5e, PCL6, Emulated PostScript Level 3 standard
Available fonts:	45 fonts for HP PCL, 136 fonts for PS
Other features:	Paper/output tray selection, duplex print, watermarks, pamphlet style, job retention for confidential/sample print, N-up, B&W reverse, mirror image, form overlay, fit to page, auto configuration, easy print (stores settings), confidential print, sample print. Note: some features are not available on all print drivers.

NETWORK SCANNING (Standard on all "S" and "F" models, optional on all "N" models)

Resolution:	200, 300, 600 dpi
Compatibility:	TWAIN compliant (push out method)
Sharpdesk licenses:	10-user licenses included (can add 1,5,50 & 100 packs)
Max. original size:	11"x17", duplex document - can scan up to 31" in length
Destinations:	Scan to E-mail, Scan to Fax, Scan to I-Fax, Scan to Desktop, Scan to FTP, Scan to Group
File types:	Single or Multi-page TIFF and PDF
User authentication:	Supports Anonymous, Simple, NTLM, Digest-MDS, Kerberos

NETWORK INTERFACE (Standard on all DM models)

Type:	RJ-45 ethernet, 10Base-T/100Base-TX
Platforms supported:	UNIX, Windows 95/98/Me, Windows NT 4.0, Windows 2000, Windows XP, Novell Netware 3.x/4.x (IntranetWare)/Netware5, Macintosh System 8.5.1-10.2
Network protocols:	IPX/SPX, TCP/IP, EtherTalk, NetBEUI
Printing protocols:	Novell Printserver Application w/NDS and Bindery, Printer resident LPD, IPP

COPYING (standard)

Original size:	Max. 11" x 17" - can scan up to 31" in length
Continuous copy:	Max. 999 copies
Resolution copy:	600 dpi
Zoom range:	From 25% to 400% with 8 preset ratios (4 reduction + 4 enlargement) From 25% to 200% from DSPF
Other features:	Auto paper selection, auto magnification selection, paper type selection, auto tray switching, E-Sort, rotation copy, reserved copy, pre-heat/auto power shut-off modes, copy auditing (100 accounts), margin shift, edge/centre erase, dual page copy mode, multi-shot copy (N in 1), booklet copy

Faxing (standard on "F" models, optional on "N" and "S" models)

Transmission time: ²	Approx. 2 seconds (Super G3); 6 seconds (G3)
Compression method:	MH, MR, MMR, JBIG
Modem speed:	33.6Kbps / 2.4Kbps automatic fallback
Transmission mode:	Super G3, G3
Line type:	PSTN, PBX
Image quality:	256 grayscale levels
Exposure adjustment:	Dark/Auto/Light
Resolution settings:	Normal/Small Letter/Fine/Extra Fine
Auto dial destinations:	500 (e-mail addresses included)
PC fax:	Direct fax from Windows applications (standard)

OPTIONS

Choose from 3 finishing options (saddle-stitch finisher, 2 bin stapler finisher or mailbox sorter). Please contact your DM-Series Reseller for further details.

LIMITED WARRANTY

All DM models come with Sharp's 1 Year, On-Site Next-Day, parts and labor, warranty. 1 and 2 Year Next-Day or Same-Day warranty extensions and Installation Packages are also available. See your local Sharp DM-Series Reseller for more information.

Design and specifications are subject to change without notice.

Sharp is a registered trademark of Sharp Corporation. All other trademarks are property of their respective holders.

¹ At rated voltage, 20 C (68 F), 65% RH.

² Based on ITU-T Test Chart #1 in standard resolution. Actual transmission time will vary based on line conditions.



As an ENERGY STAR® Partner, SHARP has determined that this product meets the ENERGY STAR® guidelines for energy efficiency.

Sharp Electronics Corporation
Sharp Plaza, Mahwah, NJ 07430-1163
1-800-BE-SHARP
www.sharpsusa.com

SHARP®